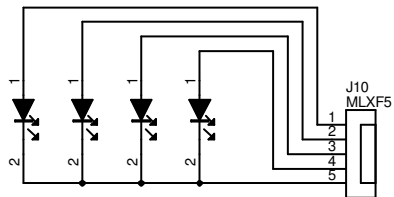
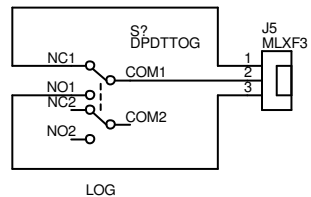


Cool LED direction indicator

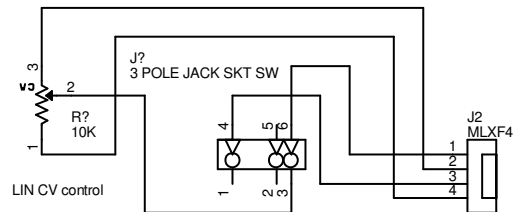


D? LED5REDLC Front  
 D? LED5REDLC Left  
 D? LED5REDLC Back  
 D? LED5REDLC Right

LIN



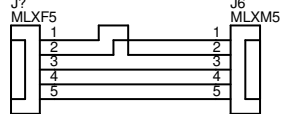
LOG



LIN CV control

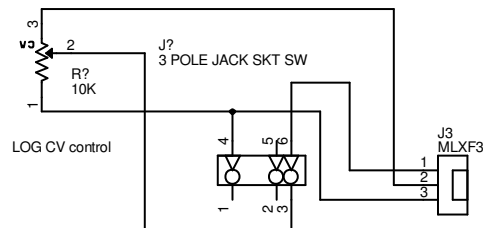
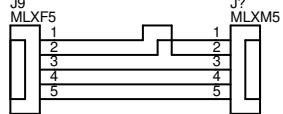
B-Format Audio Input

5 Pin XLR Female



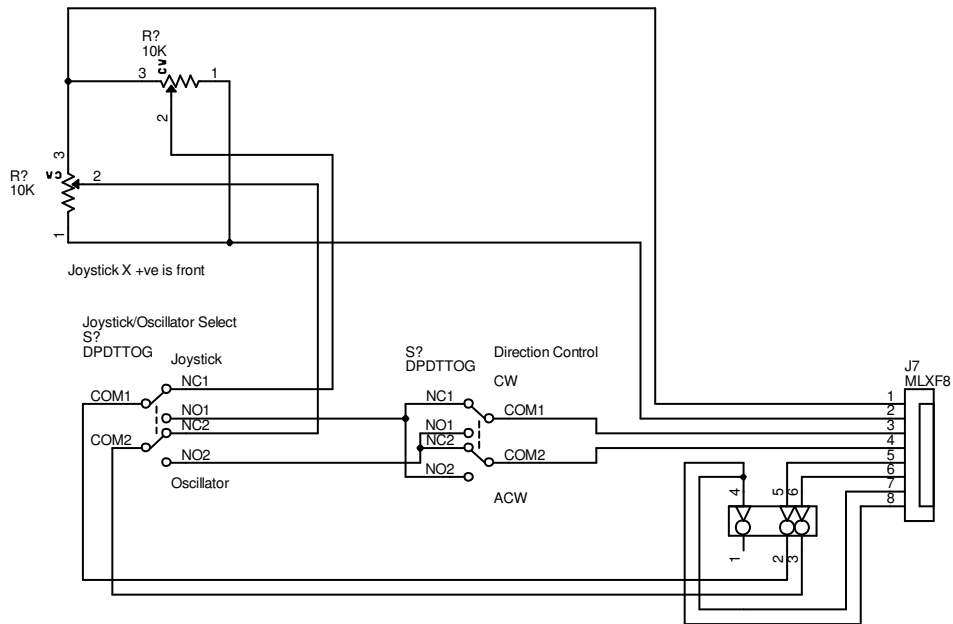
B-Format Audio Output

5 Pin XLR Male



LOG CV control

Joystick Y +ve is left



Joystick X +ve is front

Joystick/Oscillator Select

S? DPDTTOG

Joystick

Oscillator

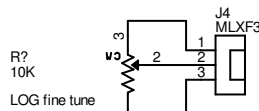
S? DPDTTOG

Direction Control

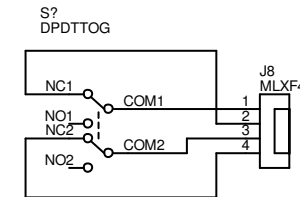
CW

ACW

External CV Input  
 J? 3 POLE JACK SKT SW



R? 10K  
 LOG fine tune



NORM / FAST speed range switch